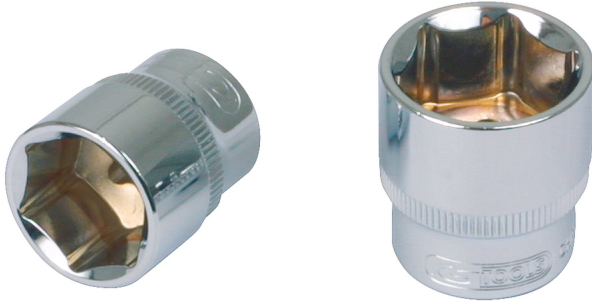


CHROMEplus® Hexagonal socket

Article No.: 918.1208

EAN: 4042146079706

RRP: €5.06 *



Description

- 6 point
- flank traction profile
- according to DIN 3124 / ISO 2725
- internal square to DIN 3120 / ISO 1174 with ball reception
- for manual operation
- mirror polished
- chrome vanadium

Properties

Depth T in mm:	7.0
Diameter D1:	13.0
Diameter D2:	23.0
Drive in inch:	1/2"
Form:	knurled
Jaw opening in mm:	8,0
Material1:	finest chrome vanadium steel mirror polished finish
Norm:	DIN 3120, ISO 1174, DIN 3124, ISO 2725
Packaging contents:	1
Packaging height, mm:	24
Packaging length, mm:	33
Packaging width, mm:	24
Total length L in mm:	38.0
Weight [g]:	45
profil2:	metric
profile1:	flank traction

