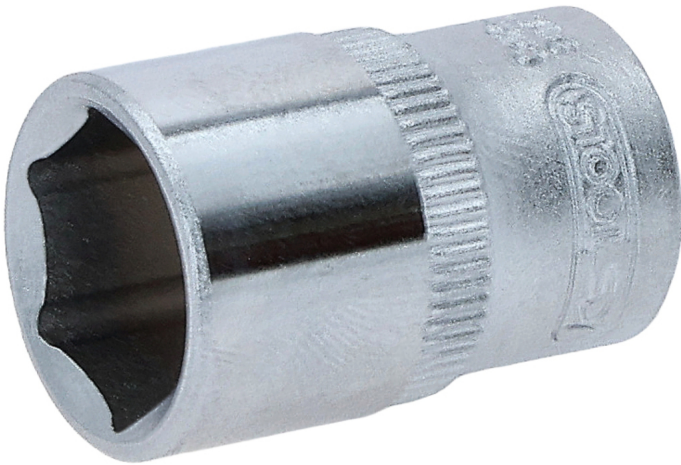


Hexagonal socket

Article No.: 917.1412

EAN: 4042146152256

RRP: €3.16 *



Description

- 6 point
- flank traction profile
- according to DIN 3124 / ISO 2725
- internal square to DIN 3120 / ISO 1174 with ball reception
- for manual operation
- matt finish
- chrome vanadium

Properties

Depth T in mm:	13.0
Diameter D1:	17.0
Diameter D2:	15.0
Drive in inch:	1/4"
Jaw opening in mm:	12,0
Material1:	finest chrome vanadium steel, matt finished
Norm:	DIN 3120, ISO 1174, DIN 3124, ISO 2725
Packaging contents:	1
Packaging height, mm:	24
Packaging length, mm:	53
Packaging width, mm:	23
Total length L in mm:	25.0
Weight [g]:	21
profile1:	flank traction

