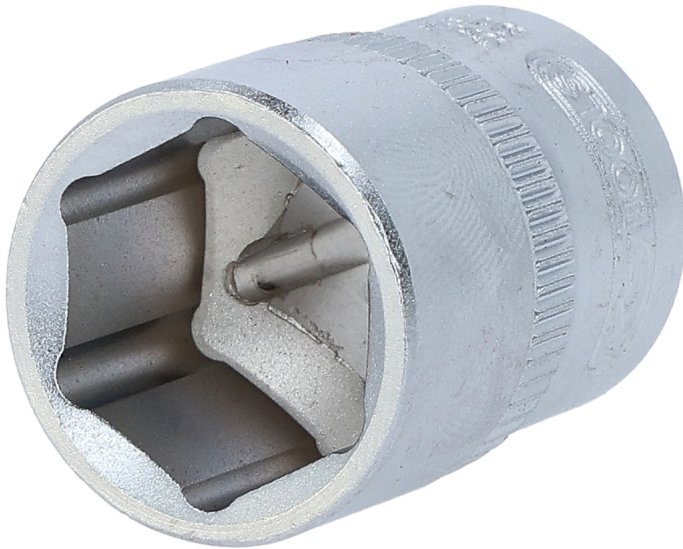


Hexagonal socket

Article No.: 917.3816
EAN: 4042146152393
RRP: €4.65 *



Description

- 6 point
- flank traction profile
- according to DIN 3124 / ISO 2725
- internal square to DIN 3120 / ISO 1174 with ball reception
- for manual operation
- matt finish
- chrome vanadium

Properties

Depth T in mm:	13.0
Diameter D1:	22.0
Diameter D2:	21.0
Drive in inch:	3/8"
Jaw opening in mm:	16,0
Material1:	finest chrome vanadium steel, matt finished
Norm:	DIN 3120, ISO 1174, DIN 3124, ISO 2725
Packaging contents:	1
Packaging height, mm:	24
Packaging length, mm:	54
Packaging width, mm:	27
Total length L in mm:	30.0
Weight [g]:	48
profile1:	flank traction

