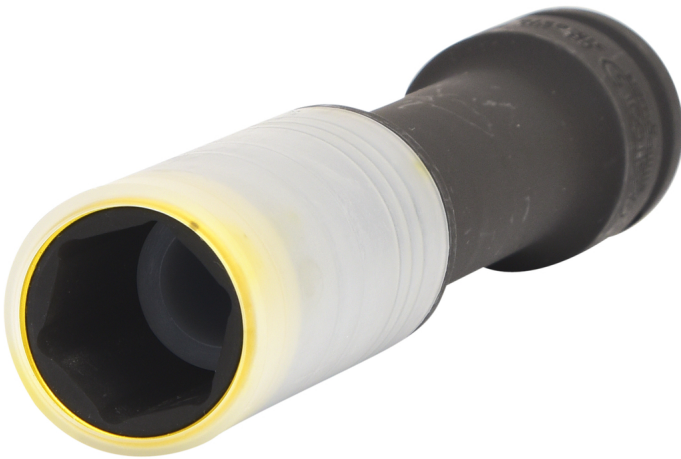


SlimPOWER Alloy rim impact socket, extra deep

Article No.: 515.0618

EAN: 4042146588734

Promotional price: €37.50 *



Description

- very robust execution
- specially for the wheel assembly and/or dismantling
- 6 point
- internal square drive to DIN 3121 / ISO 1174
- extra long execution
- for machinery usage
- plastic sleeves for the damage-free work on aluminium rims
- plastic sleeve it protects the surfaces at the wheel screws/nuts
- plastic sleeves interchangeable
- colour coded identifies the socket size
- phosphate finish
- chrome molybdenum

Properties

Colour:	yellow
Depth T in mm:	20.0
Diameter D1:	28.5
Diameter D2:	29.5
Drive in inch:	1/2"
Jaw opening in mm:	19,0
Material1:	super chrome molybdenum steel
Norm:	ISO 1174, DIN 3121
Packaging contents:	1
Packaging height, mm:	40
Packaging length, mm:	158
Packaging width, mm:	53
Total length L in mm:	150
Weight [g]:	405
profile1:	6-face

