

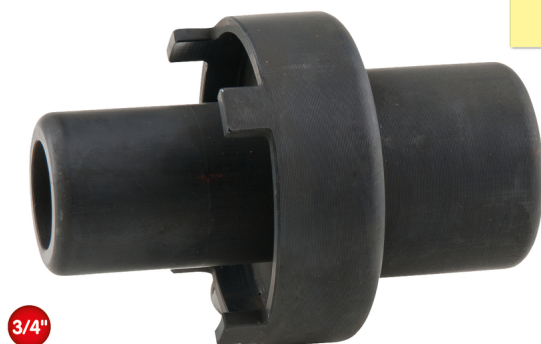
3/4" Pin wrench for rear axle shaft flange

Article No.: 450.0108

EAN: 4042146604328

RRP: €159.95 *

Mercedes
W116, W123,
W126



Description

- ideal for actuating the rear axle shaft flange on Mercedes
- for a professional repair
- special profile
- internal square drive to DIN 3120 - ISO 1174
- special tool steel

Application range / for: Mercedes W116, W123, W126

Properties

Diameter D:	55
Material1:	special tool steel
Norm:	DIN 3120, ISO 1174
Packaging contents:	1
Packaging height, mm:	70
Packaging length, mm:	150
Packaging width, mm:	100
Total length L in mm:	80
Weight [g]:	420
profile1:	3/4"

