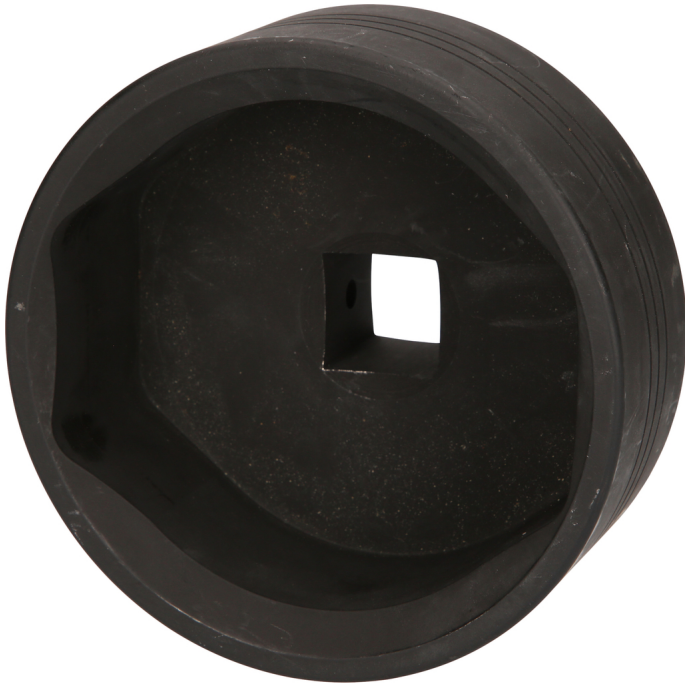


1" axle nut wrench for BPW, 111 mm

Article No.: 460.0420

EAN: 4042146785225

Promotional price: €204.00 *



Description

- internal square drive to DIN 3121 / ISO 1174
- flat oval form
- high accuracy of fit
- extremely robust version
- suitable for high tightening and loosening torque
- special tool steel

Application range / for: **BPW** axles 12 t

Properties

Application range:	BPW
Diameter in mm:	132,0
Function attribute 1:	robust
Height in mm:	80,0
Material1:	special tool steel
Packaging contents:	1
Packaging height, mm:	108
Packaging length, mm:	162
Packaging width, mm:	142
Weight [g]:	2000
wrench size SW in mm:	111,0

